



Medit Scanner

How to Export Scan Data

You can export scan files in (STL) format by using the Export feature.

INSTRUCTIONS

1. Go to Work Box.
2. Select the case with the scan files that you wish to export.
3. Click the Export button from either command options in Work File List (1) in the Scan Stage (2).
4. The scan files will be exported in the format that you have chosen in the Settings menu. To change the format to STL to be used for aligners please complete the following;

If you enable the feature Settings > Set Export Option > Always ask you each time you export, the following dialog window will pop up every time you export, allowing you to set the export option.

(a) CAD program for which you want to use your exported data in.

The options for CAD program are exocad, 3shape, Maestro, Kuzler, and DWOS. Please choose 3shape, the file will be converted according to the 3D axis used in that particular program. (It does not mean that the program has been integrated.)

(b) Export File

Choose a storage location for exported files.

(c) Preferred Mesh Format

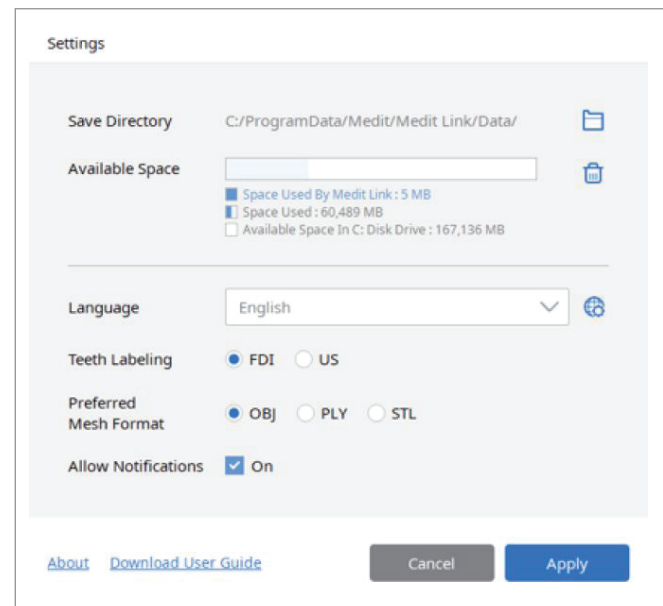
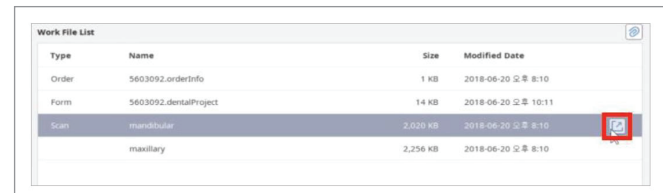
Choose STL as your preferred mesh format.

(d) Combine Individual Mesh

Select combine scanbodies with jaw data to export the bite along with the arches.

(e) Always ask you each time you export

Every time you export, you will be asked whether to use the current settings for this export. For SLX® Clear Aligners, say Yes.



SLXClearAligners.com | Tel: +(1) 760-448-8600