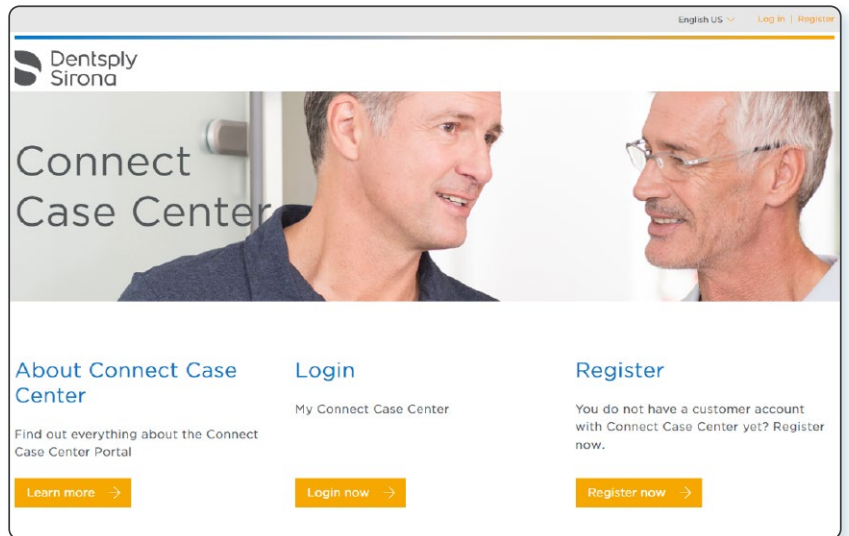


# DDX & Primescan Integration Guide

## Prerequisite:

- An active Dentsply Sirona Connect Case Center (CCC) account
- An active DDX account
- Disable pop up blockers on your web browser.

**Step 1:** Login to your Dentsply Sirona Connect Case Center (CCC) account at <https://customer.connectcasecenter.com>



**Step 2:** Enter your username and password and click 'login'.

A screenshot of the login form titled 'Login to Connect Case Center'. It contains a 'Username' field with the value 'drjoe@email.com' and a 'Forgot your User ID?' link. Below it is a 'Password' field with masked characters and a 'Forgot your password?' link. There is a 'Remember login' checkbox and a large orange 'Login' button at the bottom.

**Step 3:** Add your lab Partner by clicking “My Favorite Recipients” from the left-side menu.

The screenshot shows a user interface with a left-side menu and a main content area. The menu is organized into sections: MY ACCOUNT, MY COMPANY, PARTNER, ORDERLIST, USER MANAGEMENT, and CONNECT CASE CENTER INBOX. The 'PARTNER' section is circled in red, and 'My Favorite Recipients' is highlighted in orange. The main content area is titled 'My Favorite Recipients' and includes a search bar, a message stating 'Your company has no favorite recipients', and a map showing various locations like 'Cobra Puma Golf', 'Reno Wilson', 'SIS Wholesale', 'Henry Schein Orthodontics', and 'Zimmer Dental Inc'.

**Step 4:** Enter the lab assigned to your practice.  
*(Consult with your account sales representative in case of uncertainty regarding the lab assigned to your practice).*

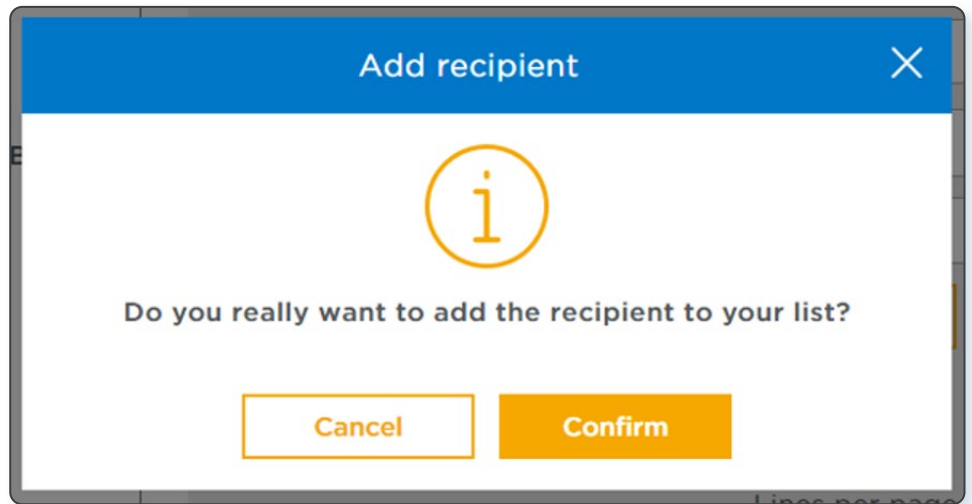
For SLX Aligner Users –  
 Enter ‘Henry Schein Orthodontics’

The screenshot shows a search form with the following fields: Recipient, Zipcode, and City. Below these is a search bar with a magnifying glass icon. There are two radio buttons: 'Search direct' (selected) and 'Search around me'. The 'Name of Recipient' field is circled in red and contains the text 'Henry Schein Orthodontics'. Other fields include 'Country' (set to 'All'), 'Zip Code' (placeholder 'Enter Zip Code'), 'City' (placeholder 'Enter City'), 'Service' (placeholder 'Choose your option'), and 'Offer' (placeholder 'Choose your option'). At the bottom are 'Clear Fields' and 'Start search' buttons.

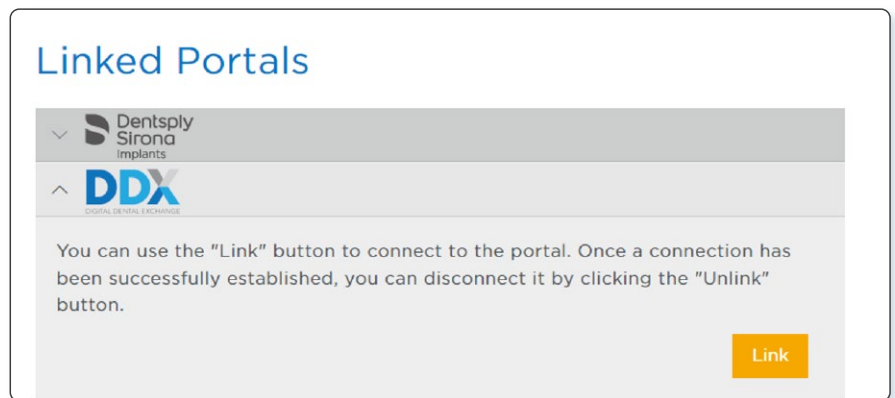
**Step 5:** Add desired lab by clicking the “+” next to the desired lab from the search results.

Recipient	Zipcode	City	
Henry Schein Orthodontics	92008	Carlsbad	+

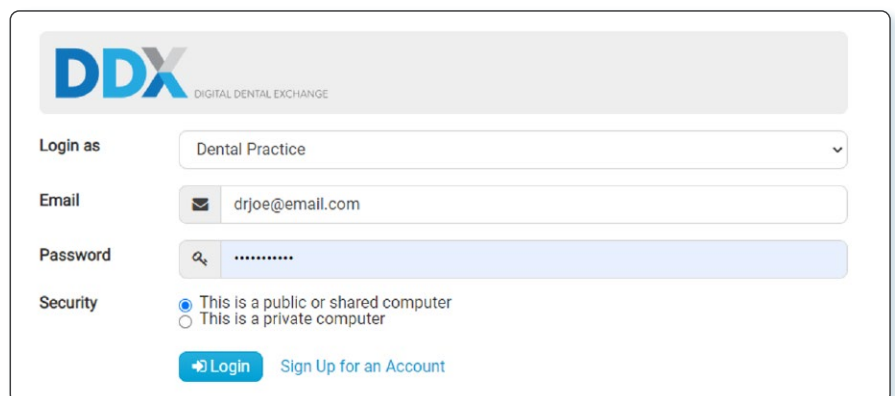
**Step 6:** Click Confirm.



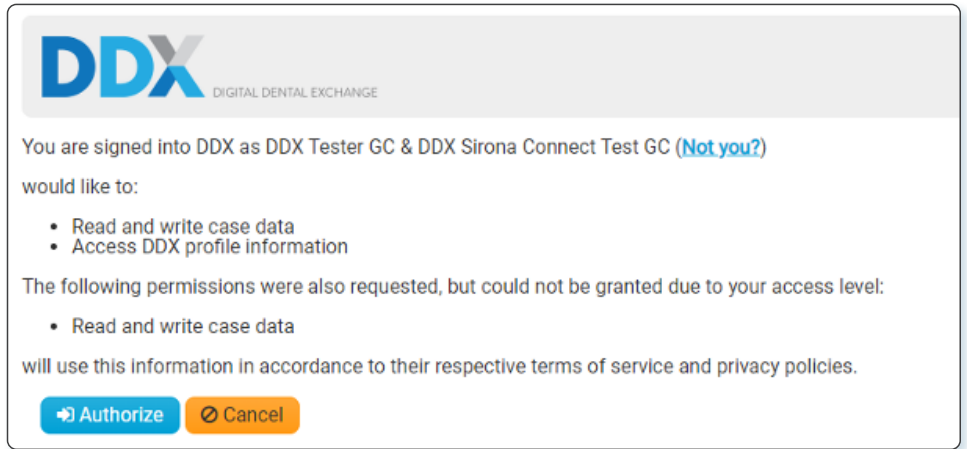
**Step 7:** Link your Connect Case Center dentist account to your DDX practice account by clicking "Linked Portals" from the left-side menu.



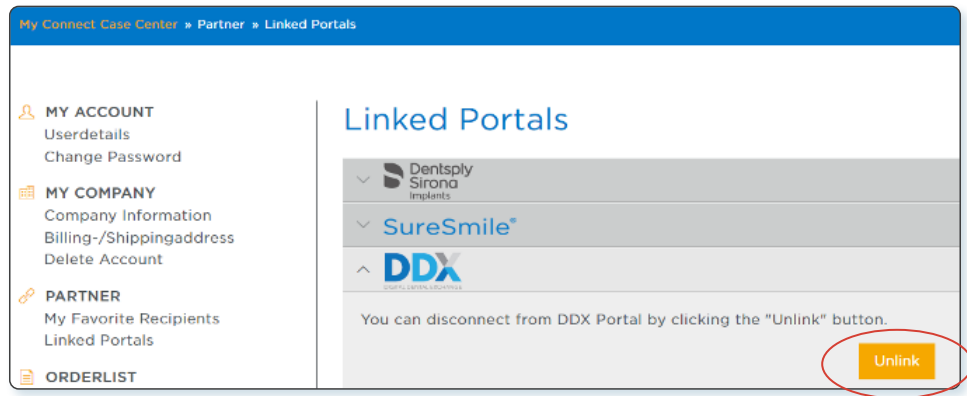
**Step 8:** Once the DDX login screen launches, enter your DDX practice account credentials, and click "Login"



**Step 9:** Click “Authorize” to complete the link.



**Step 10:** Confirm the link was successful (“Link” button will change to “Unlink” if this was successful).



**Your integration is successfully complete!**  
Get started with your aligner case submission by sending patient scans from **Primescan** directly to **DDX**.